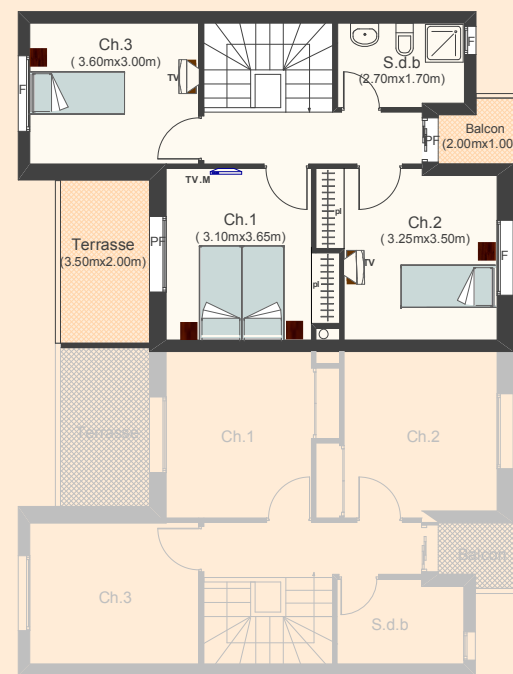
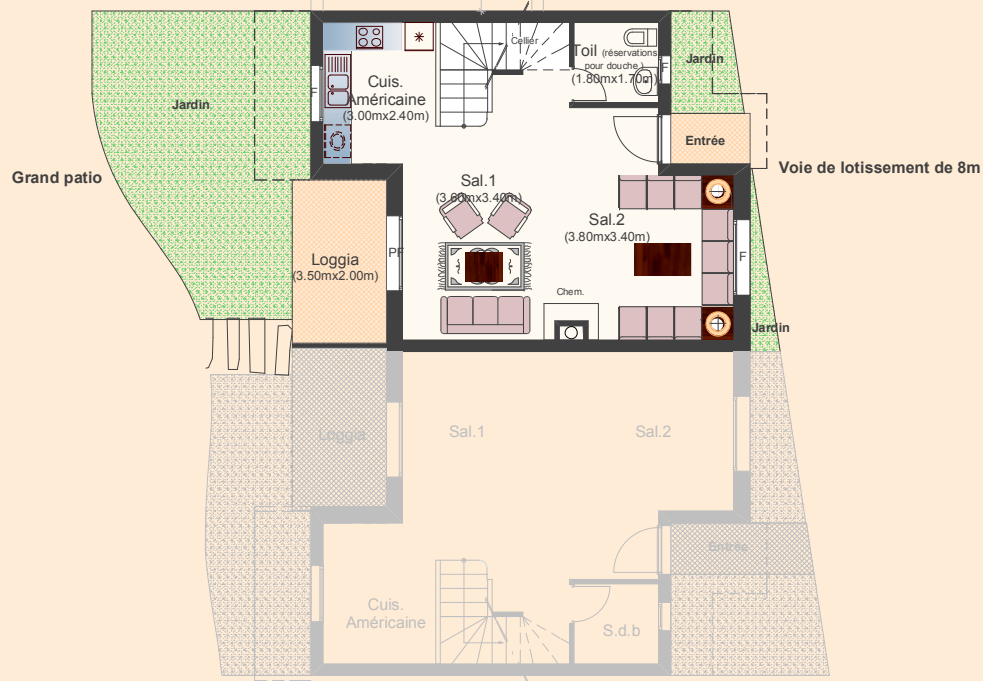
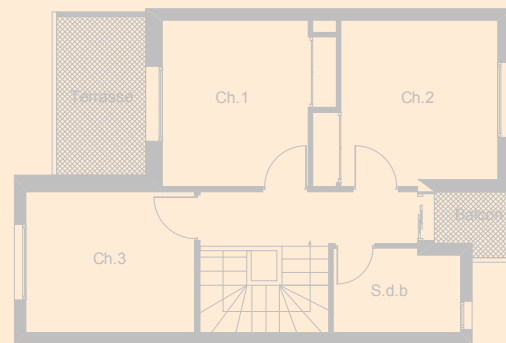
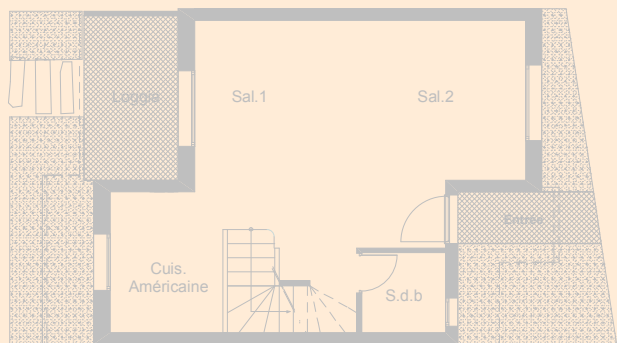




# RESIDENCE OASIS II

**DUPLEX 12**      **118 m<sup>2</sup>**



La surface construite est repartie comme suit :

SHV (dont loggia) = 109.00 m<sup>2</sup> } S.V  
 Terrasse (Etagé) + Balcon = 9.00 m<sup>2</sup> }

SC = 118.00 m<sup>2</sup>