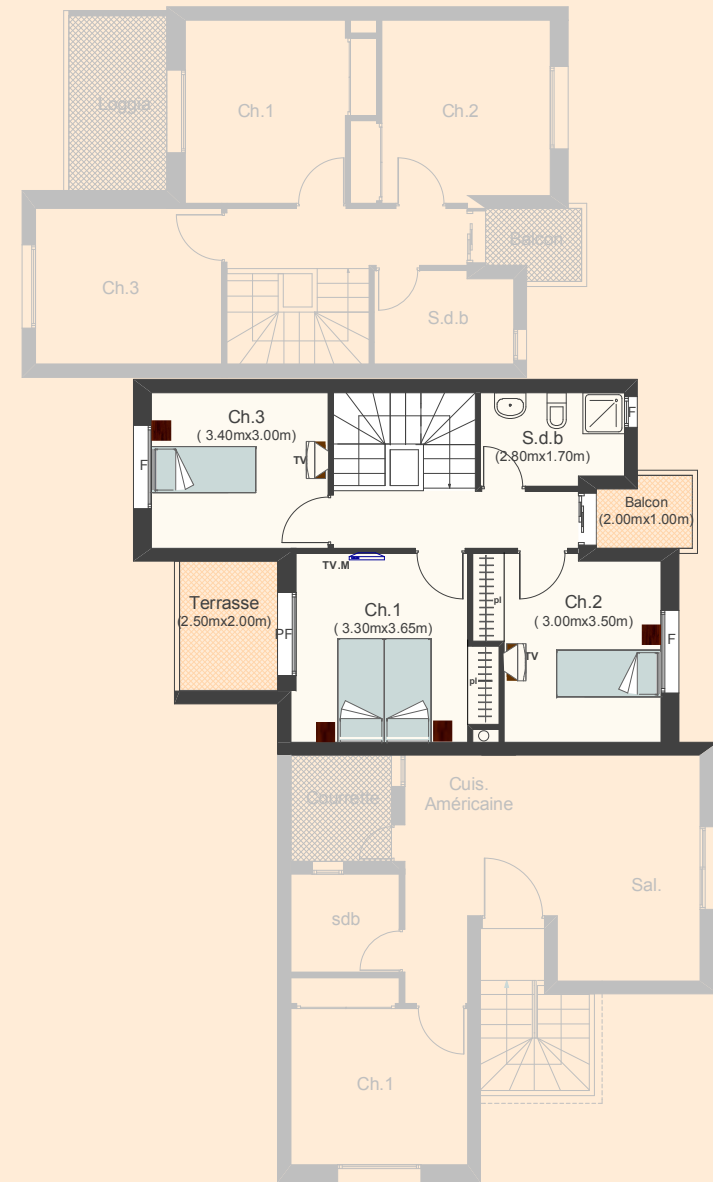




RESIDENCE OASIS II

DUPLEX 14

117 m²



La surface construite est répartie comme suit :

| | | |
|--------------------------|-------------------------------|-------|
| SHV (dont loggia) | = 110.00 m ² |] S.V |
| Terrasse (Etage) +Balcon | = 7.00 m ² | |
| SC | = 117.00 m² | |