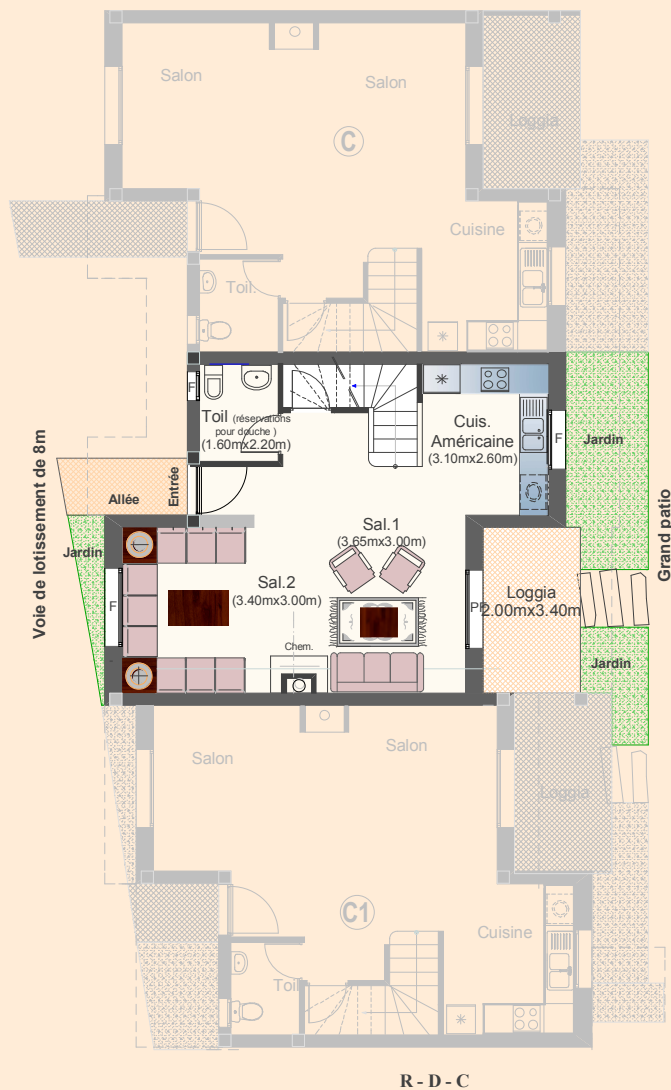


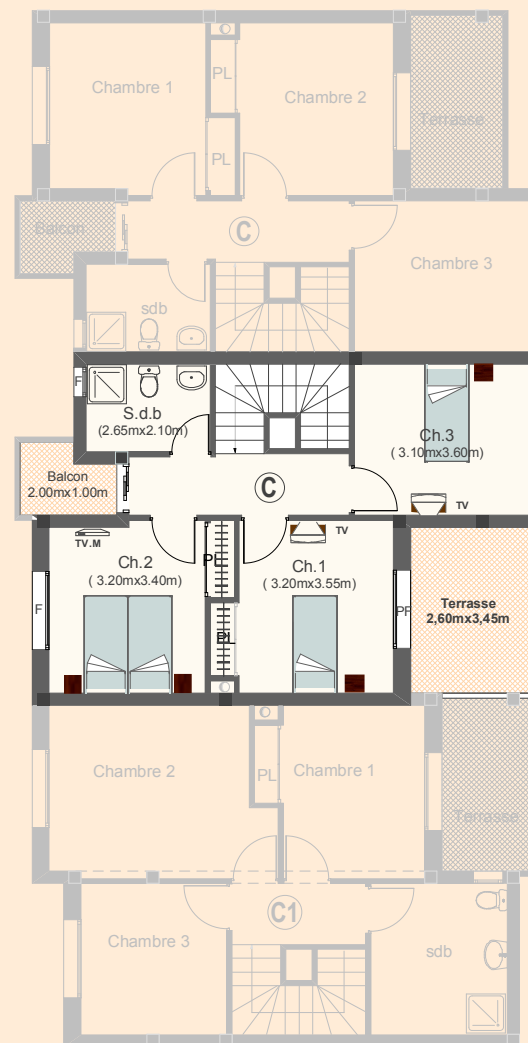


RESIDENCE OASIS II

DUPLEX N°32 Type C **120 m²**



R - D - C



ETAGE

La surface construite est repartie comme suit :

Surface Habitable Vendable (dont loggia) = 109.00 m² } s.v.
Terrasse (Etage) + Balcon = 11.00 m² }

SC = 120.00 m²