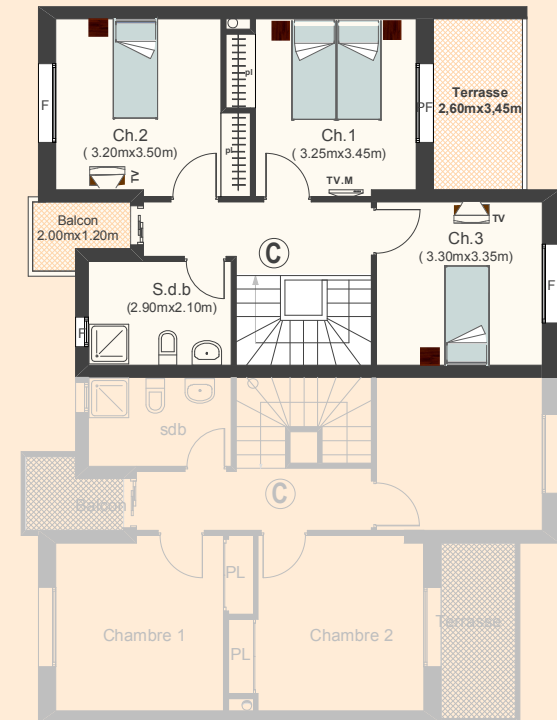
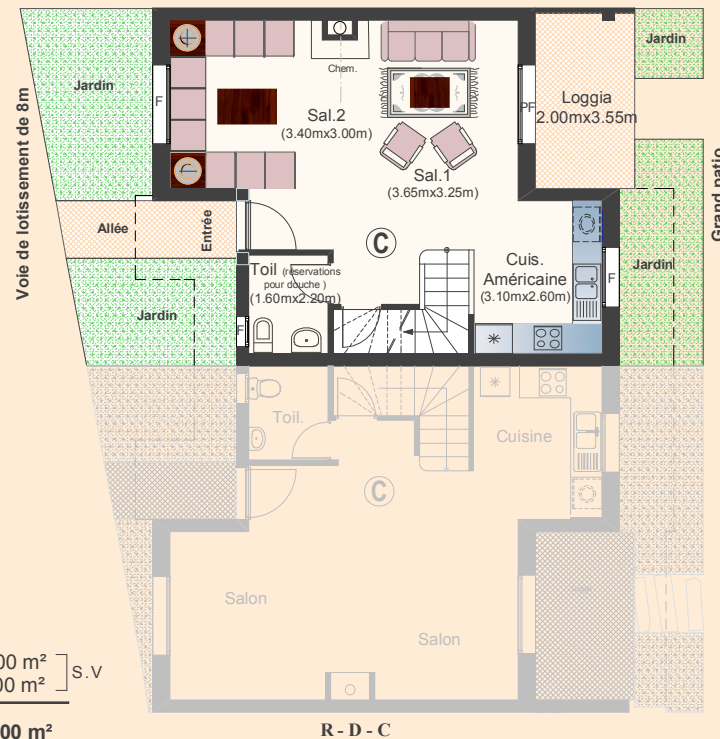
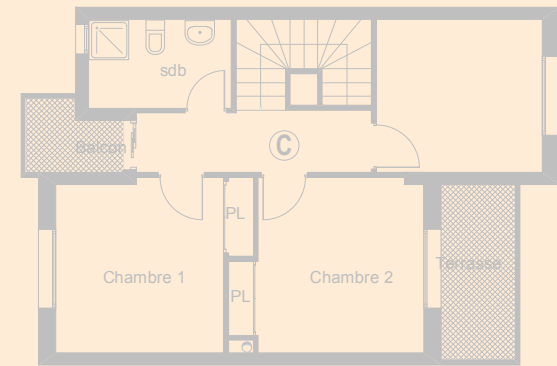
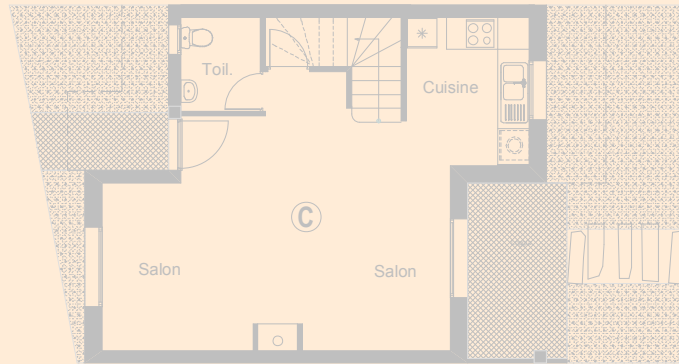




# RESIDENCE OASIS II

**DUPLEX N°33 Type C 119 m<sup>2</sup>**



La surface construite est repartie comme suit :

Surface Habitable Vendable (dont loggia) = 110.00 m<sup>2</sup> } S.V.  
Terrasse (Etagé) + Balcon = 9.00 m<sup>2</sup>

SC

= 119.00 m<sup>2</sup>

R - D - C

ETAGE