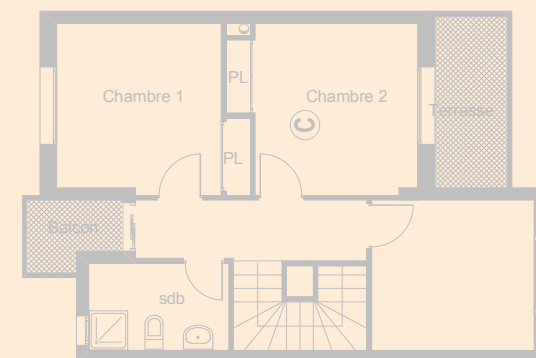
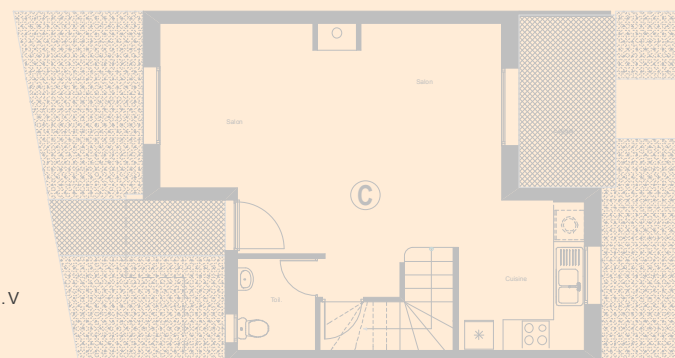
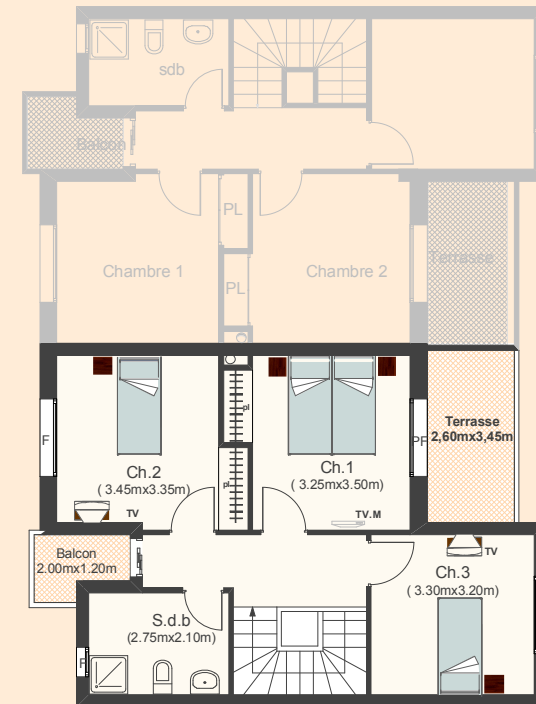
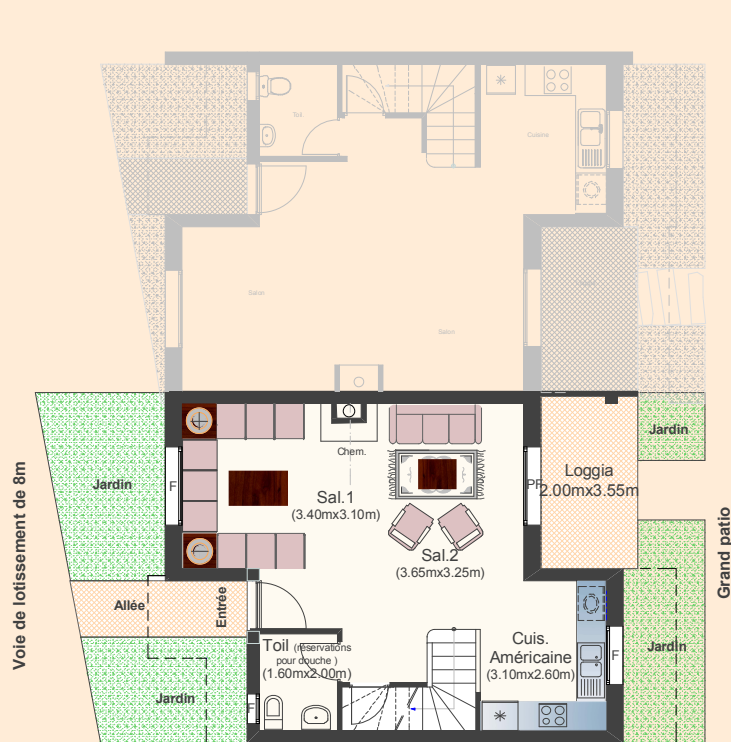




# RESIDENCE OASIS II

**DUPLEX N°34 Type C 118 m<sup>2</sup>**



La surface construite est répartie comme suit :

Surface Habitable Vendable (dont loggia) = 109.00 m<sup>2</sup>  
 Terrasse (Etagé) + Balcon = 9.00 m<sup>2</sup> S.V

SC = 118.00 m<sup>2</sup>

R - D - C

ETAGE