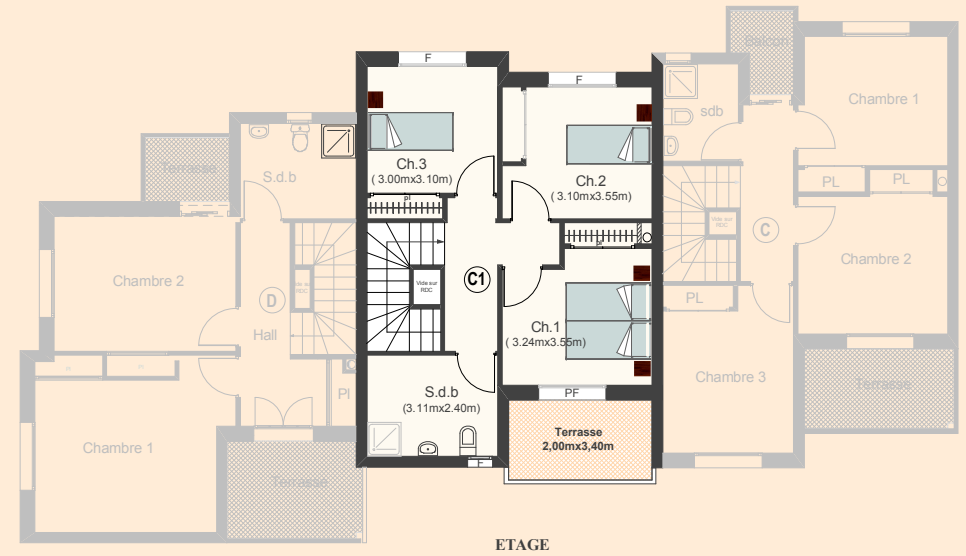
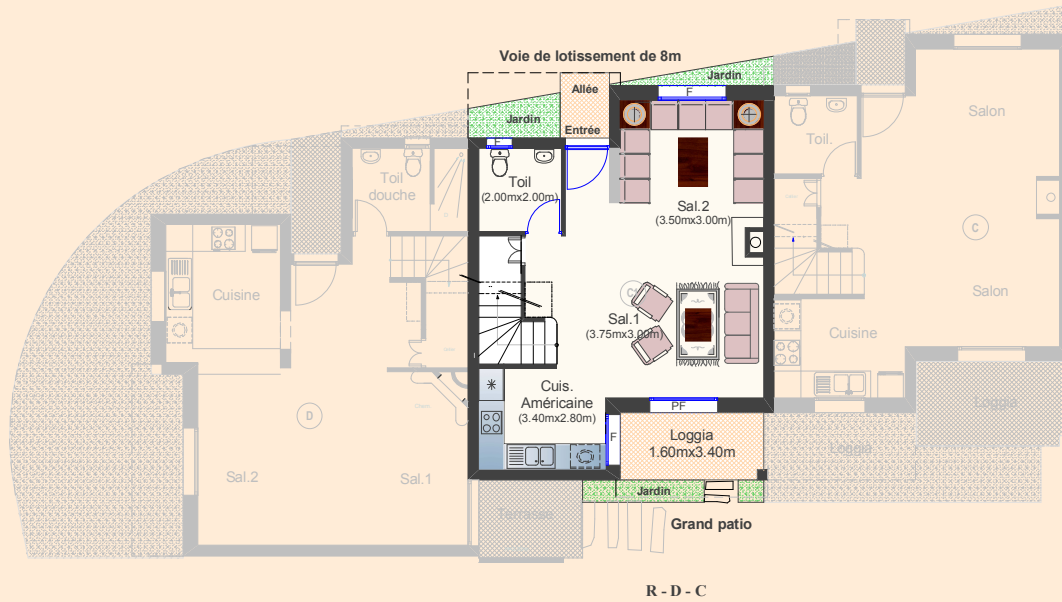




## RESIDENCE OASIS II

DUPLEX N°37 Type C1 **117 m<sup>2</sup>**



La surface construite est répartie comme suit :

SHV (dont loggia)	= 111.00 m <sup>2</sup>	] S.V
Terrasse (Etage) + Balcon	= 6.00 m <sup>2</sup>	
<b>SC</b>	<b>= 117.00 m<sup>2</sup></b>	