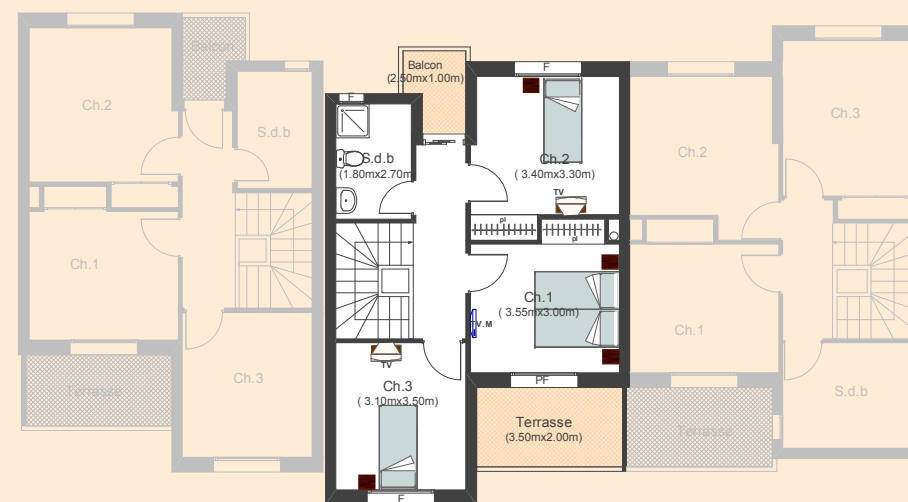
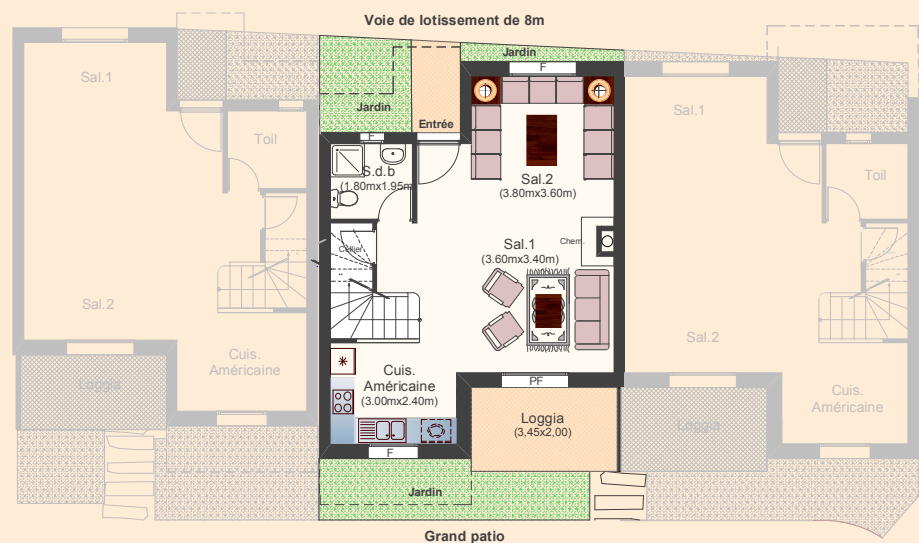




## RESIDENCE OASIS II

DUPLEX 47      119 m<sup>2</sup>



La surface construite est répartie comme suit :

SHV (dont loggia)	= 110.00 m <sup>2</sup>	] S.V
Terrasse (Etagé) + Balcon	= 9.00 m <sup>2</sup>	
<b>SC</b>	<b>= 119.00 m<sup>2</sup></b>	