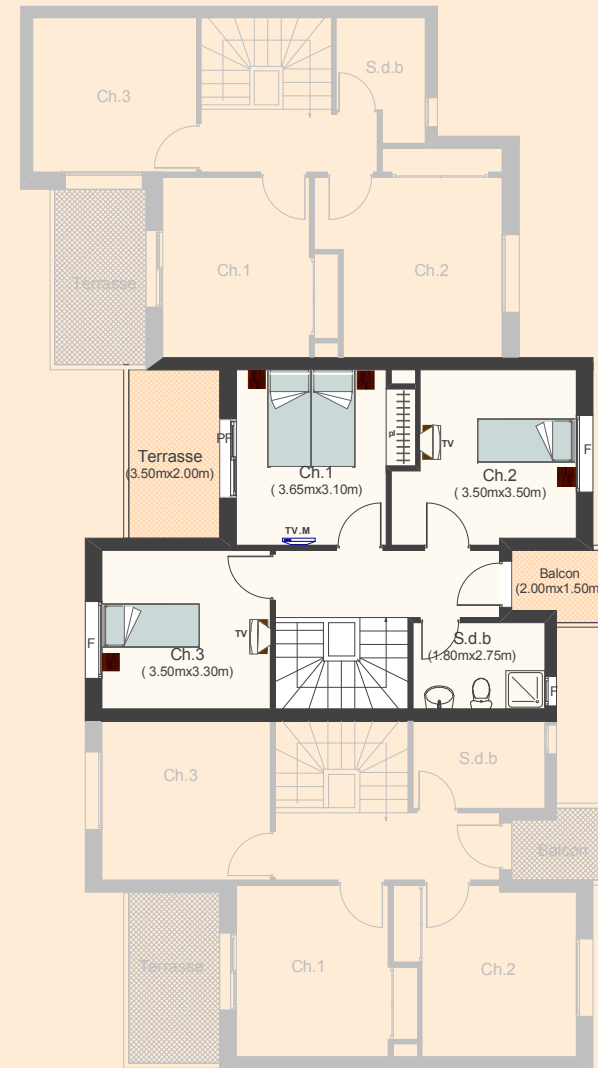
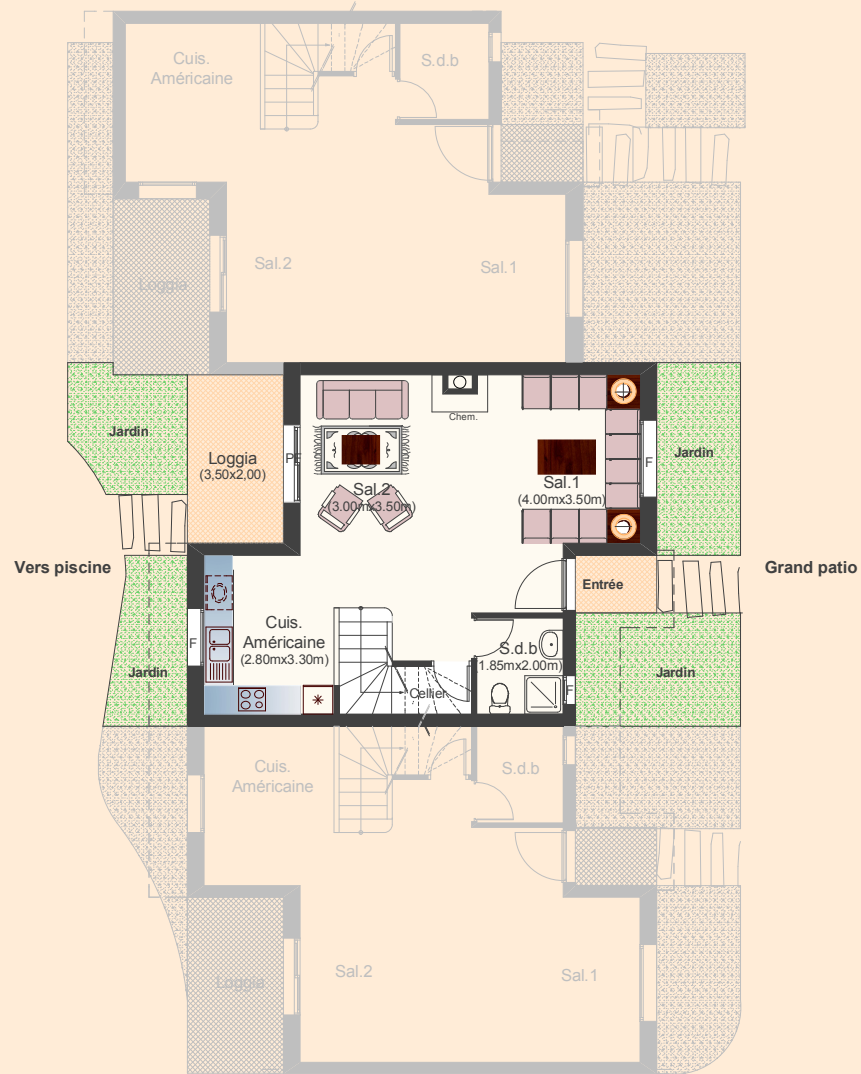




# RESIDENCE OASIS II

DUPLEX 51

123 m<sup>2</sup>



La surface construite est répartie comme suit :

SHV (dont loggia) = 114.00 m<sup>2</sup> } S.V  
Terrasse (Etage) + Balcon = 9.00 m<sup>2</sup> }

SC = 123.00 m<sup>2</sup>